



Data Transfer Application Manual


MINI CALIBRATOR

MC-20

【MC-20 Data Transfer Software - Directions】

Please refer to page 6 about install application.

● Start up

Double click  icon to start up MC-20 Data Transfer Application.

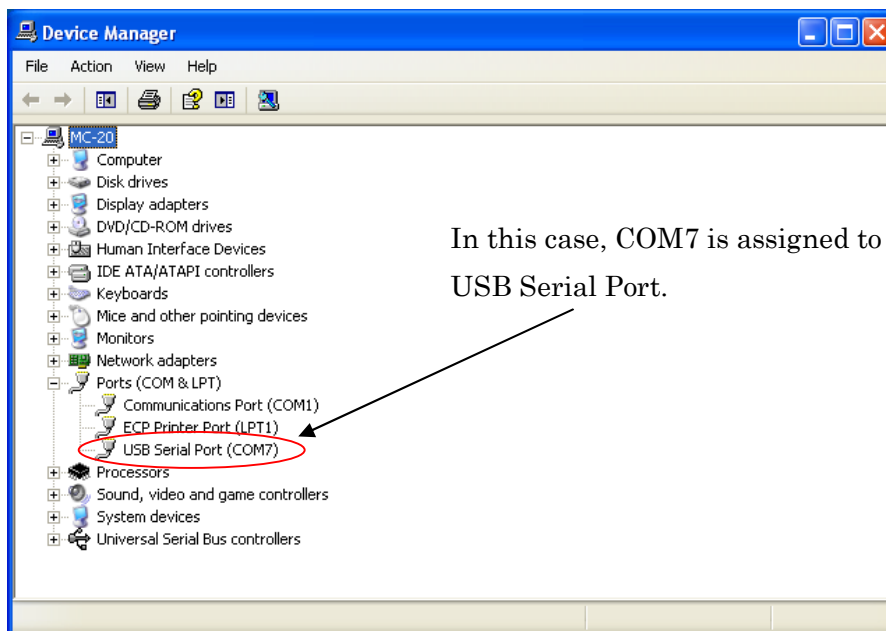
<Settings>

○ Port select

Open Device Manager (Control panel > System > Hardware) and select Port (COM, LPT).

Confirm which port is assigned to USB Serial Port.

Open COM port menu on MC-20 application and Select COM port number which is confirmed as above. (COM1 to COM8 can be selected)



○ Baud Rate

No need to change (default is 9,600 bps)

<MC-20 Settings>

Connect MC-20 to PC using supplied USB cable.

Turn power on MC-20.

Set MC-20 to “Link” on PC Link menu.

Application detects MC-20 and indicator of connection changes from yellow (Not Connected) to green (Connected).

● Data transfer

There two ways to transfer data from MC-20 to PC.

① Single transfer

Push Enter button while measuring to transfer current data to PC.

Transferred data is added to list.

② All data transfer

Select Transmit on Data transmit menu to transfer all data to PC.

● Main screen

Main screen is follows.

①

MC20 Data transfer

COM Port: COM7 Baud rate: 9600bps Connected

Open Save Print Close Exit

MC-20

NO.	Sensitivity	Unit	Bias	Unit	Date	Time	Note
1	19.2	mV/m/s ²	8.07	V	2009/05/11	15:45:12	
2	1.04	pC/m/s ²			2009/05/11	15:46:17	
3	4.86	pC/m/s ²			2009/05/11	15:46:59	Model:P51C
4	4.87	pC/m/s ²			2009/05/11	15:47:28	
5	0.387	mV/m/s ²	7.24	V	2009/05/11	15:48:13	
6	19.2	mV/m/s ²	8.05	V	2009/05/11	15:49:00	
7	19.2	mV/m/s ²	7.95	V	2009/05/11	15:49:31	
8	0.389	mV/m/s ²	7.22	V	2009/05/11	15:50:16	
9	0.389	mV/m/s ²	7.22	V	2009/05/11	15:50:20	

② ③ ④ ⑤ ⑥ ⑦ ⑧ ⑨

① File name

File name is displayed. In case of new file, file name is empty. In case of loading the existing file, the selected file name is displayed.

② Number

These numbers mean order of transferred.

③ Sensitivity

Transferred sensitivity data

④ Unit

Unit which was set during the calibration

⑤ DC bias

DC bias voltage for IEPE accelerometer

(Column is blank for charge-output type sensors)

⑥ DC bias Unit

Unit of DC bias voltage

⑦ Date

Transferred date in case of single transfer. Registered date in case of all data transfer.

⑧ Time

Transferred time in case of single transfer. Registered time in case of all data transfer.

⑨ Note

Up to 40 characters comments can be set

● Function

Open

Open file which was stored. Select the file.

Save

Save data as CSV file.

* Please refer to page 5 about description of CSV file.

- Save As..

Set file name and save

- Save

Overwrites file

When you click “Save” the message “Are you sure to overwrite?” will be displayed. Select “Yes” to overwrite and save.

※ When you select “No” in response to “Are you sure to overwrite?” you can save under a new file name.

- Print

① Please set printer before using this application. This application can not set the printer condition.

* How to set printer condition

- Open printer setting (Control panel > System > Printers and Faxes)
- Select printer which is being used.
- Set conditions to select Printing Preferences.

② Click Print button to print.

<Note>

Print settings cannot be changed here. Please follow print settings in ①.

In addition, the printer specified here will become the “Default printer” set in Printers and Faxes. To return to the original settings, select the previous printer in Printers and Faxes and set as the Default Printer.

- Close

Close data and all data are deleted.

Please save data if file dialog appears.

- Exit

Exit this application.

If data is not saved, data will be deleted. So please save data before exit application.

○ CSV data format

	A	B	C	D	E	F	G	H	I	J	K
1	19.2	0	0	0	1	0	807	09/05/11	15:45:12		
2	1.04	0	0	1	0	1	31	09/05/11	15:46:17		
3	4.86	0	0	1	2	1	33	09/05/11	15:46:59	Model:P51C	
4	4.87	0	0	1	2	1	31	09/05/11	15:47:28		
5	0.387	0	0	0	0	0	724	09/05/11	15:48:13		
6	19.2	0	0	0	0	0	805	09/05/11	15:49:00		
7	19.2	0	0	0	1	1	795	09/05/11	15:49:31		
8	0.389	0	0	0	1	0	722	09/05/11	15:50:16		
9	0.389	0	0	0	1	1	722	09/05/11	15:50:20		
10											
11											
12											

- ① ② ③ ④ ⑤ ⑥ ⑦ ⑧ ⑨ ⑩

① Sensitivity

Accelerometer's sensitivity

② Unit

0: SI unit (pC(mV)/ m/s²)

③ Acceleration

0: 10 m/s²(rms)

④ Transducer Type

0: IEPE (ICP®), 1: Charge

⑤ IEPE current

0: 0.5 mA, 1: 2.0 mA, 2: 4.0 mA

⑥ IEPE Voltage

0: 15V, 1: 24V

⑦ DC bias voltage

Voltage = A × 10⁻² (V)

For measurement mode "1" of ④ (Charge-output type sensor), although a small figure will be displayed, this value is invalid.

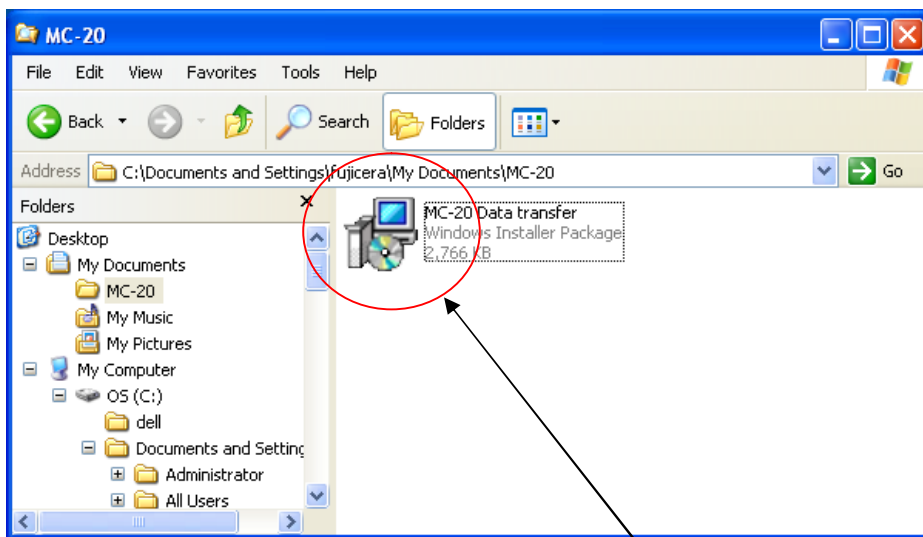
⑧ Date
Year, Month, Date

⑨ Time
Hour, Minutes, Seconds

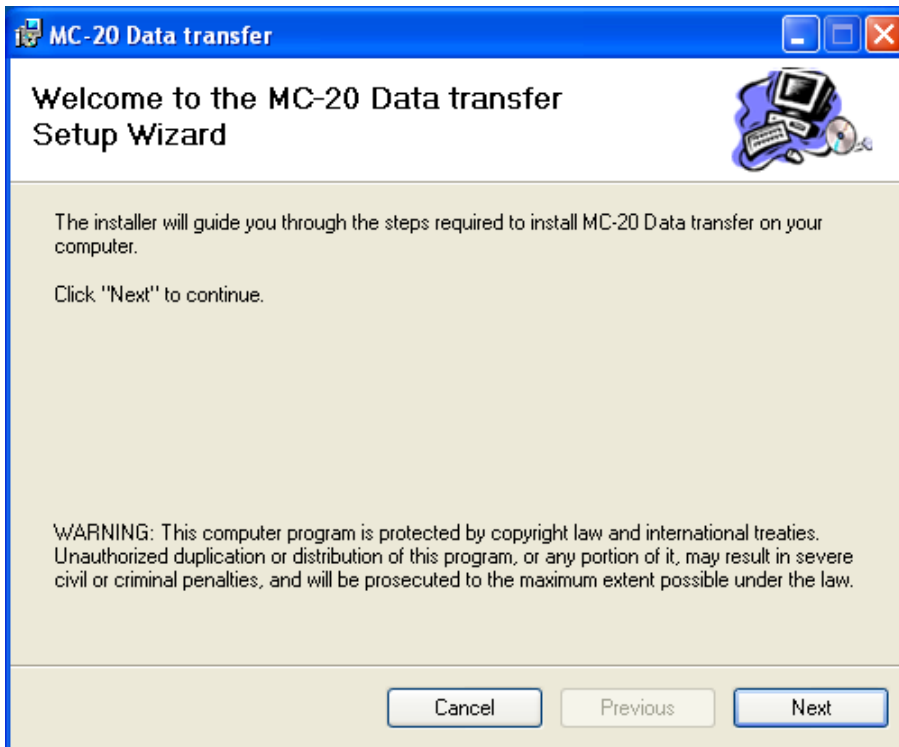
⑩ Note
Note or comment

【MC-20 Data Transfer Application installation】

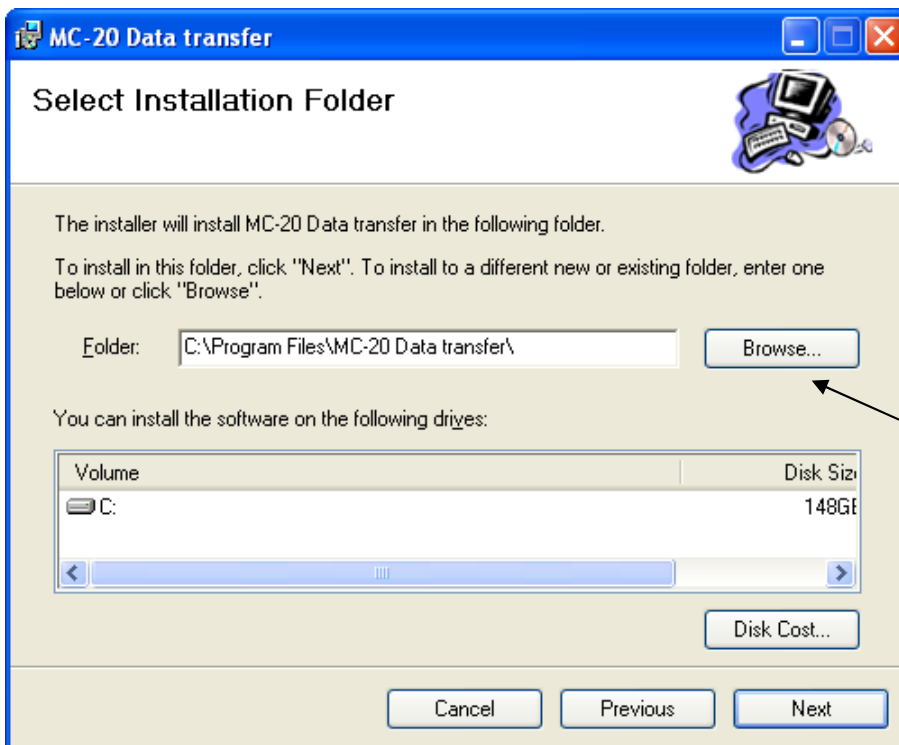
- Run “MC-20 Data transfer” which is included in supplied CD.



Click MC-20 Data transfer.

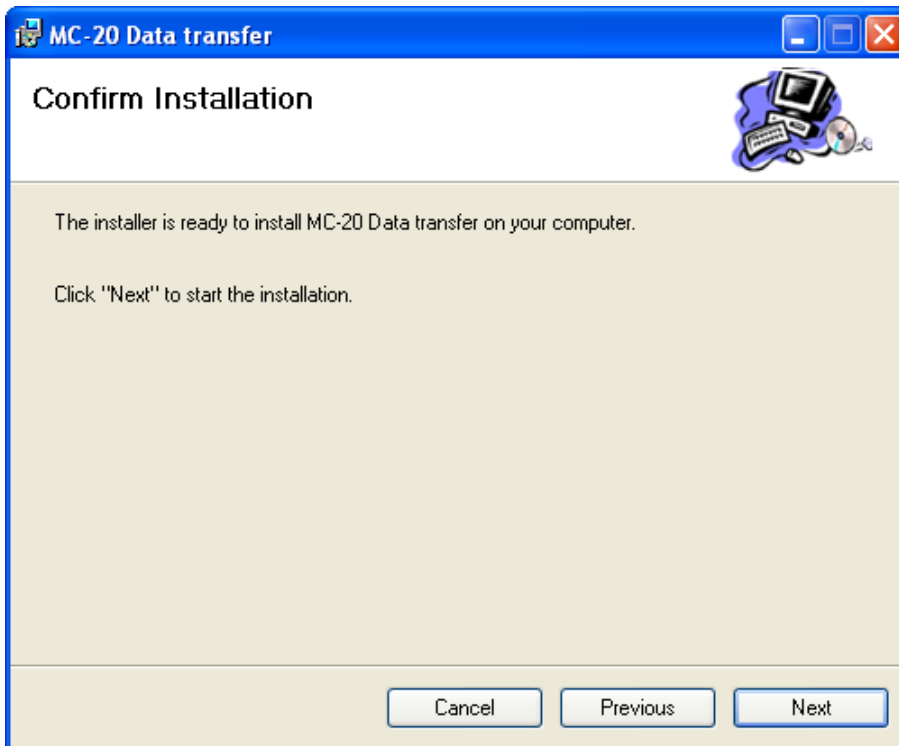


Click Next button to continue.

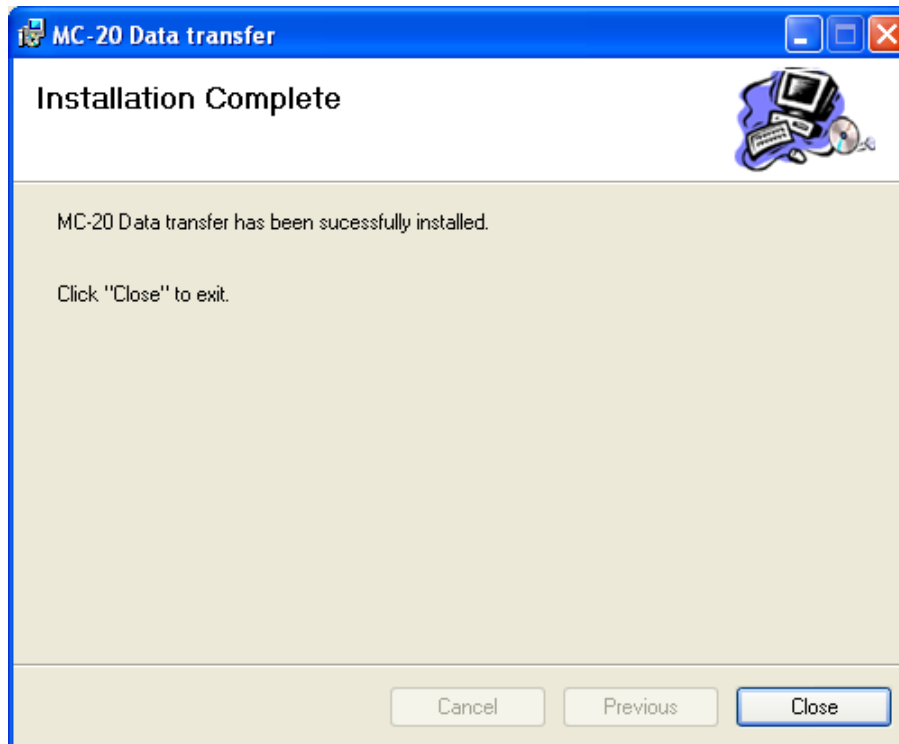


Click Browse button to change the folder which application will be installed

Click Next button to continue.



Click Next button to continue.
Application is being installed.



Click Close to finish install.

【USB driver for MC-20 installation】

Following dialog appears when MC-20 is connected to PC first.
In this case, USB driver for MC-20 has to be installed.

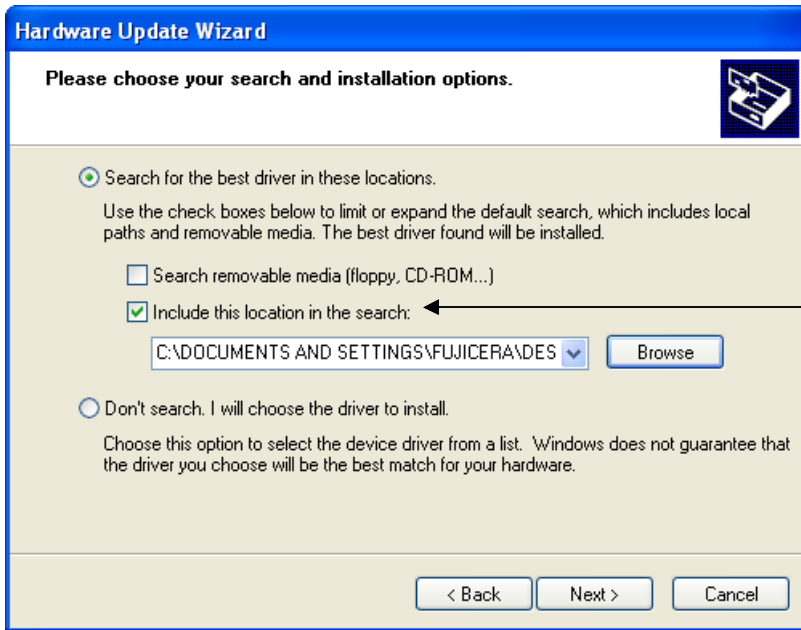
1. Insert the accompanying CD into your PC's CD-ROM drive.
2. Connect the MC-20's dedicated USB cable to the PC and switch the MC-20 on.



Select Install from a list or specific location.

Click Next button to continue.

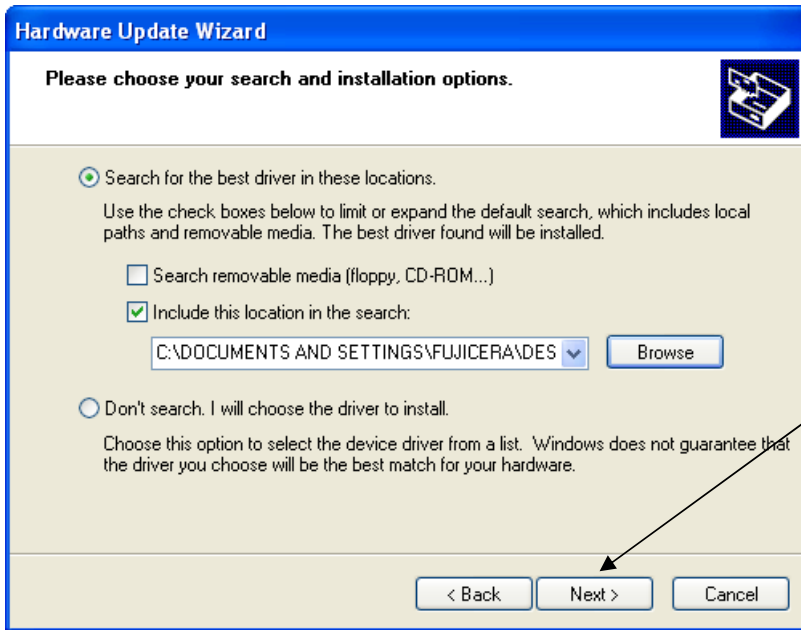
- ※ If you delete the above screen or if it does not appear, go to System>Device Manager, open USB<->Serial properties and select Update Driver, and the above screen will be displayed.



Select “Include this location in the search” and click “Browse”.



Select “CDM 2.04.06 WHQL Certified” located under “USB Driver Installation” in the CD, and click “OK”.



The screen to the left will be shown again. Click “Next”.



Click Finish

When you click “Finish” the first screen of the ‘Found New Hardware Wizard’ will be displayed again. Repeat the procedure up to this point.

Installation is complete when the “Found New Hardware Wizard” screen stops appearing.



Yamamiya 2320-11, Fujinomiya-shi, Shizuoka pref. 418-0111

TEL 0544-58-4651

FAX 0544-58-1413

URL: <http://www.fujicera.co.jp>

E-mail: sales_dept@fujicera.co.jp